

# TeraSlate® Crea

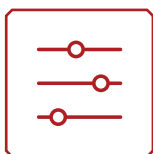
Customisable solar module for the roof



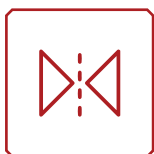
Building integrated photovoltaics (BIPV)



Hail resistance class 5



Custom module shapes & sizes



Low-glare options & variety of colours available



Frameless design for self-cleaning



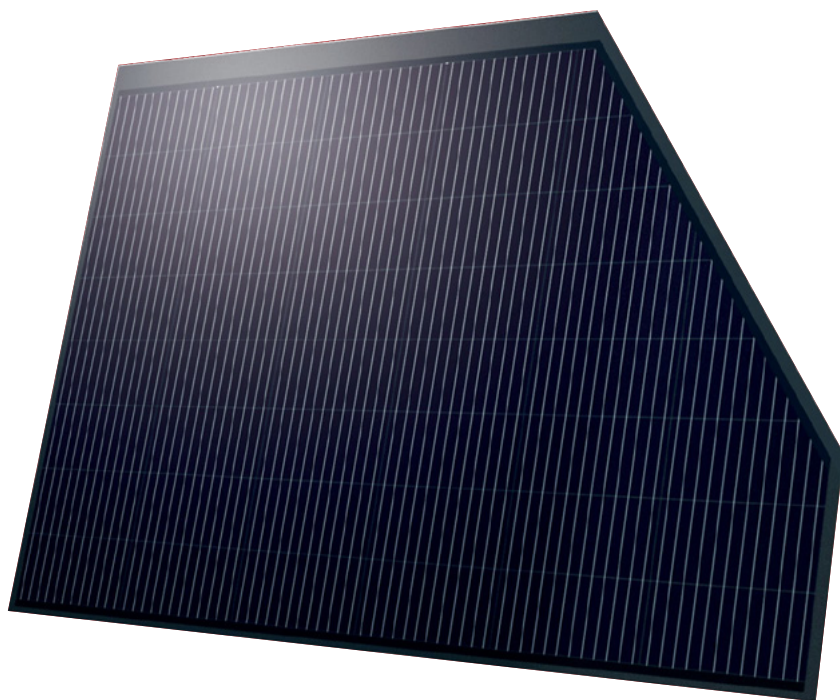
Maximum fire resistance B Roof(t1)



Swiss made



Salt mist & ammonia resistance



## 10 - 48 cells

## 196 Wp/m<sup>2</sup>

## Low carbon module

130 kg CO<sub>2</sub> eq/m<sup>2</sup>

**40** year weather resistance guarantee

**100%** produced with CO<sub>2</sub>-neutral energy

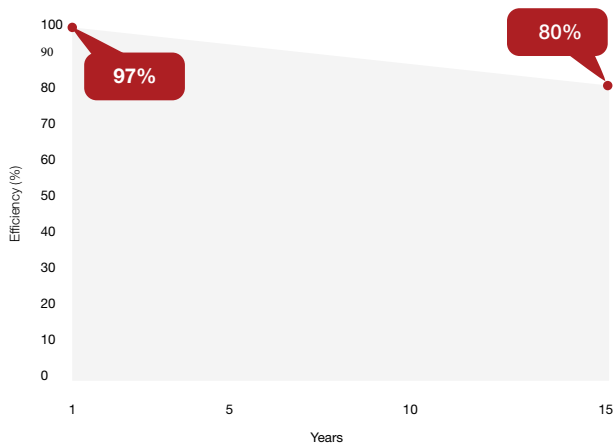
**80%** performance guarantee over 15 years

Electrical specifications	
Nominal power (Wp)	Depending on the size and number of the planned solar cells
Voltage Umpp (V)	
Current Impp (A)	
Open-circuit voltage Uoc (V)	
Short-circuit current Isc (A)	
Module efficiency (%)	
Maximum system voltage (VDC)	1000
Maximum reverse fuse rating (A)	15
Safety class	II
Tolerance power, current, voltage	± 5% bzw. ± 7W
Temperature coefficient Pmax (%/K)	-0.319
Temperature coefficient Uoc (%/K)	-0.244
Temperature coefficient Isc (%/K)	+0.039

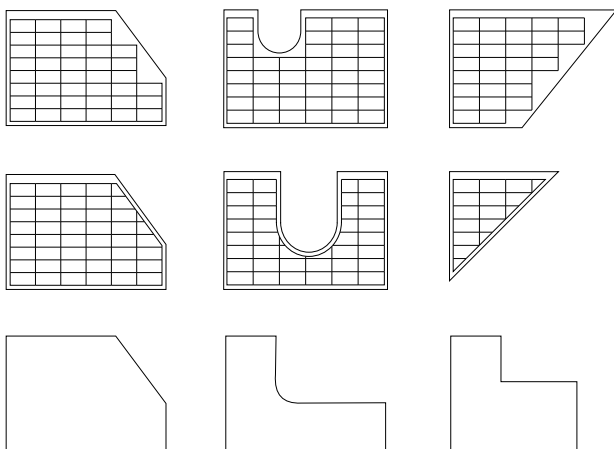
Electrical performance data at STC (1000 W/m<sup>2</sup>, 25 °C, AM 1.5)

Warranties	
Product warranty	10 years
Performance guarantee	1 year on the 97% of the minimum performance 15 years on the 80% of the minimum performance
Weather resistance guarantee	40 years

### Performance guarantee over 15 years



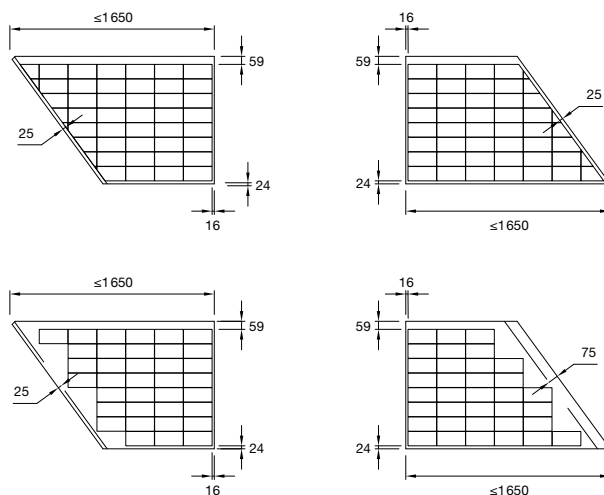
### Crea variants and shape examples



Mechanical specifications	
Length (mm)	Depending on the size and number of the planned solar cells
Width (mm)	
Weight (kg)	
Thickness (mm)	6.5
Design	Glass / Backsheet
Glass	5 mm ESG solar glass
Quantity of half-cells	10 - 48
Cell type	G12
Junction box	3Qxy series (QC solar)
Junction box cable	Solar cable H1Z2Z2-K, 4 mm <sup>2</sup> , lenght 1.4 m (QC solar)
Electrical connector	Original MC4 (Stäubli Electrical Connectors AG)
Hail resistance class VKF	HW 5 hailstones Ø 50 mm at 30.8 m/s (111 km/h)
Maximum load (Tested compressive load and suction load according to IEC 61215)	5400 N/m <sup>2</sup> (compressive load) 8000 N/m <sup>2</sup> (compressive load alpine) 2400 N/m <sup>2</sup> (suction load) 3600 N/m <sup>2</sup> (suction load alpine)

### Module dimensions (mm)

#### Examples with active and inactive cells



### Certifications & standards

Applied standards	IEC 61730:2016; IEC 61215:2021; SIA 261, 261/1; EN 1990
Rain tightness	CEN/TR 15601
Salt mist - corrosion test	acc. IEC 61701
Ammonia - corrosion test	acc. IEC 62716
Fire class according to DIN EN 13501-5	BRooft(t1)
Fire class VKF	RF1 - Is considered a non-combustible top layer

### Packing information

Packaging	Reusable wooden pallets (empty weight 37 kg)
Number of modules	30 modules per pallet
Pallet size (L x W x H)	145 x 120 x 105 cm



This datasheet is not legally binding. The manufacturer reserves the right to make changes to product specifications and / or product features without prior notice. The most recent versions of all documents (GTCs, datasheets, warranties and installation manuals) can be found on our website at: [www.3-s.com](http://www.3-s.com)

